

DIRECTORS, CORPORATE AUDITORS, AND CORPORATE OFFICERS

As of June 29, 2005

BOARD OF DIRECTORS

YASUO TOMINAGA

Chairman and Representative Director

TADANOBU NAGUMO

President and Representative Director

KEIGO UEDA

Director and Senior Managing Corporate Officer

President of Sports Group, in charge of Corporate Personnel Dept., Corporate General Affairs Dept., Corporate Purchasing Dept., General Manager of Corporate Compliance Dept., General Manager of Hiratsuka Factory

TAKASHI SUGIMOTO

Director and Senior Managing Corporate Officer

President of Tire Group, in charge of Off-the-road Tire & Aircraft Tire Div.

TETSUYA MIZOGUCHI

Director and Managing Corporate Officer

President of Multiple Business Group, General Manager of Industrial Products Div.

TAKASHI YAMASHITA

Director and Managing Corporate Officer

In charge of Tire Technology and Tire Production, General Manager of Original Equipment Tire Sales Div.

TATSUNARI KOJIMA

Director and Managing Corporate Officer

In charge of Secretariat, Corporate Planning Dept., Corporate Communications Dept., Corporate Finance & Accounting Dept., MIS Dept., Internal Audit Dept., President of Yokohama Corporation of North America

CORPORATE AUDITORS

MASAAKI KUSHIDA

SEIICHI SUZUKI

JUNNOSUKE FURUKAWA

YUZURU FUJITA

CORPORATE OFFICERS (NOT ON THE BOARD OF DIRECTORS)

TOSHIHIKO SHIRAKI

Managing Corporate Officer

General Manager of Tire Domestic Sales & Marketing Div.

MASAMICHI DANJO

Managing Corporate Officer

In charge of Quality Assurance, Environmental Conservation Dept., General Manager of R&D Center

AKIHISA TAKAYAMA

Corporate Officer

General Manager of Tire Production Technology Div.

MICHIO YUGE

Corporate Officer

General Manager of Hoses and Coupling Div.

TOSHIO IZAWA

Corporate Officer

In charge of Multiple Business Production

YASUHIRO MIZUMOTO

Corporate Officer

General Manager of Tire Production Div.

SHINICHI SUZUKI

Corporate Officer

Vice President of Yokohama Tire Corporation

KOICHI TANAKA

Corporate Officer

Deputy General Manager of Tire Domestic Sales & Marketing Div.

TAKASHI FUKUI

Corporate Officer

General Manager of Tire Overseas Sales & Marketing Div.

TOORU KOBAYASHI

Corporate Officer

General Manager of Tire Planning Div., Chairman of Yokohama Tire Philippines, Inc.

TOSHIHIKO SUZUKI

Corporate Officer

General Manager of Tire Technical Div.

NORIO KARASHIMA

Corporate Officer

President of Yokohama Tire Corporation, President of Yokohama Corporation of America

HIDEO FUJIWARA

Corporate Officer

General Manager of Corporate Finance & Accounting Dept.

ICHIRO KONDO

Corporate Officer

Chairman of Hangzhou Yokohama Tire Co., Ltd.

HAJIME YAMAZAKI

Corporate Officer

In charge of MB Technical, General Manager of Hamatite Div., General Manager of MB Business Development Center

GLOBAL NETWORK



Yokohama Aerospace America, Inc.

Yokohama Tire (Canada) Inc.



SAS Rubber Company

Yokohama Corporation of North America

GTY Tire Company

YH America, Inc.

Panama Office

Yokohama Corporation of America

Yokohama Tire Corporation

OVERSEAS SUBSIDIARIES AND AFFILIATES

PRODUCTION AND SALES OF TIRES AND RELATED PRODUCTS

Yokohama Tire Corporation
Hangzhou Yokohama Tire Co., Ltd.
Yokohama Tire Philippines, Inc.
Yokohama Tyre Vietnam Company
Yokohama Tire Manufacturing (Thailand) Co., Ltd.
GTY Tire Company

SALES OF TIRES AND RELATED PRODUCTS

Yokohama Tire (Canada) Inc.
Yokohama Corporation of America
Yokohama Tyre Australia Pty. Ltd.
Yokohama HPT Ltd.
Yokohama Italia SPA
Yokohama (Suisse) SA
Yokohama Scandinavia AB
Yokohama Reifen GmbH
Yokohama Austria GmbH
Yokohama Danmark A/S
Yokohama Russia L.L.C.
N.V. Yokohama Belgium S.A.
Yokohama Tire Sales Philippines, Inc.
Yokohama Tire Taiwan Co., Ltd.
Yokohama Tire Korea Co., Ltd.

HOLDING COMPANY FOR SHARES OF YTC AND OTHER COMPANIES

Yokohama Corporation of North America

MARKETING SUPPORT AND SERVICES FOR EUROPEAN SALES COMPANIES

Yokohama Europe GmbH

PRODUCTION AND SALES OF WINDSHIELD SEALANTS AND HOSES

YH America, Inc.
Yokohama Rubber (Thailand) Co., Ltd.

PRODUCTION AND SALES OF WINDSHIELD SEALANTS

Yokohama HAMATITE (Hangzhou) Co., Ltd.

PRODUCTION AND SALES OF HOSES

SAS Rubber Company
SC Kingflex Corporation
Yokohama Hoses & Coupling (Hangzhou) Co., Ltd.

SALES OF AIRCRAFT COMPONENTS

Yokohama Aerospace America, Inc.

OVERSEAS REPRESENTATIVE OFFICES

Jeddah Office
Riyadh Office
Dubai Office
Panama Office
Singapore Office
Asia Representative Office (Bangkok)

CORPORATE GOVERNANCE

One of management's top priorities is to reinforce corporate governance to ensure transparency and fairness. The basic concepts and key initiatives are as follows.

1. Amid a dramatically changing business environment, since 1988 we have gradually shrunk our board of directors to streamline discussions and decision-making. In 2003, we halved director terms to one year to clarify responsibilities. After the shareholder gathering for fiscal 2004, we introduced an executive officer system to enhance management decision-making and accelerate implementation.
2. We reinforced the strategic roles of top management by establishing the Management Council, whose members include the chairman, president, and directors. The Council discusses business plan strategies and implementation.
3. To handle directors and corporate officers more transparently and fairly, we set up the Directors and Corporate Officers Personnel and Compensation Committee, with the board discussing and deciding on its recommendations.
4. We maintain a four-member Board of Corporate Auditors, which includes two external members, to enhance oversight through fair auditing. The members are Junnosuke Furukawa, member of the board and senior advisor of The Furukawa Electric Co., Ltd., and Yuzuru Fujita, president and chief executive officer of ASAHI MUTUAL LIFE INSURANCE COMPANY. Full-time auditors must participate in Management Council and other important meetings. We also conduct internal audits of all operations based on annual plans. We have appointed one person to assist the auditors. In addition to exchanging information and opinions with accounting auditors, full-time auditors conduct interviews on the results of accounting and operational audits made by five internal auditing officials in line with annual plans. Furukawa Electric and ASAHI MUTUAL LIFE INSURANCE are major shareholders of Yokohama Rubber. We do business with ASAHI MUTUAL LIFE INSURANCE. We do no transactions with the external auditors.
5. Yokohama Rubber selected Ernst & Young ShinNihon as its independent auditor based on the Commercial Code to audit accounts based on the Securities and Exchange Law. There are no conflicts of interest between Yokohama Rubber and Ernst & Young ShinNihon or its officials who audit the Company.

In addition to reinforcing corporate governance, we strengthened our compliance system to satisfy community expectations. We set up the following committees to meet our corporate social responsibilities and increase employee understanding of issues related to corporate ethics, compliance, information security, personal information protection, and environmental protection.

COMPLIANCE COMMITTEE

We established the Compliance Committee in April 2003 to inform employees about Group compliance and corporate ethics. In May 2005, we established the Compliance Office to reinforce the Group compliance system, which extends to overseas subsidiaries.

RISK MANAGEMENT COMMITTEE

This committee fortifies our defense against various Group risks. It conducts educational forums and regularly assesses risks. We also maintain the Central Disaster Prevention Committee, the Environmental Preservation Promotion Committee, and other entities for more focused risk management.

PERSONAL INFORMATION PROTECTION COMMITTEE

We inaugurated this body in April 2005 to underscore the importance of private information and ensure that the Company properly handles such data. The committee formulates rules and educates employees.

INVESTOR INFORMATION

As of March 31, 2005

COMPANY NAME:

The Yokohama Rubber Co., Ltd.

HEAD OFFICE:

36-11, Shimbashi 5-chome, Minato-ku, Tokyo 105-8685, Japan

ESTABLISHED:

October 13, 1917

PAID-IN CAPITAL:

¥38,909 million

SETTLEMENT DATE:

March 31

GENERAL MEETING OF SHAREHOLDERS:

June

TRANSFER AGENT:

The Chuo Mitsui Trust and Banking Company, Limited
33-1, Shiba 3-chome, Minato-ku, Tokyo 105-8574, Japan

STOCK EXCHANGE LISTINGS:

Tokyo, Osaka, Nagoya

INVESTOR CONTACT:

PR/IR Section, Corporate Communications Dept.
36-11, Shimbashi 5-chome, Minato-ku, Tokyo 105-8685, Japan
Phone: 81-3-5400-4531 Facsimile: 81-3-5400-4570

INVESTOR RELATIONS WEBSITE:

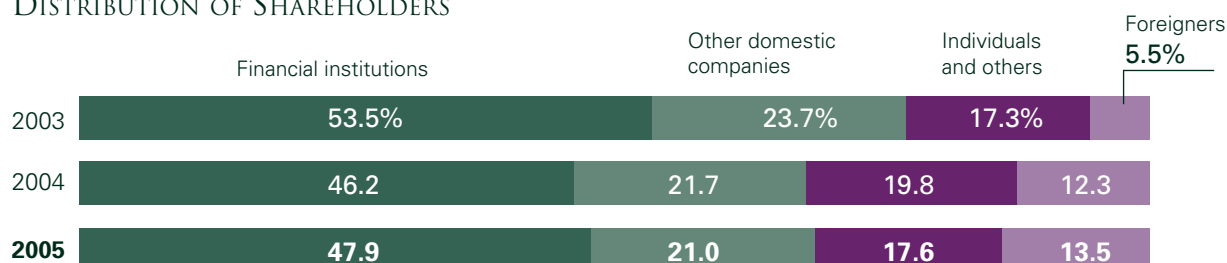
http://www.yrc-pressroom.jp/ir_en/

STOCK INFORMATION

As of March 31, 2005

Authorized Number of Shares:	480,000,000
Issued Number of Shares:	342,598,162 (unchanged from fiscal 2004 year-end)
Number of Shareholders:	20,914 (down 1,184 from fiscal 2004 year-end)

DISTRIBUTION OF SHAREHOLDERS



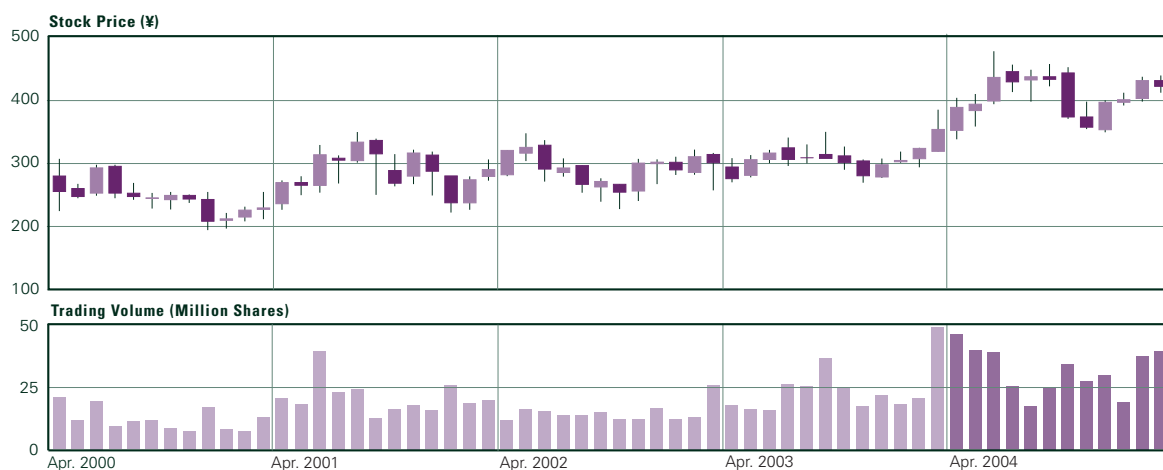
MAJOR SHAREHOLDERS

Name	Percentage of Voting Rights
Master Trust Bank of Japan, Ltd. (trust account)	7.9%
Japan Trustee Service Bank, Ltd. (trust account)	7.9
The Furukawa Electric Co., Ltd.	5.9
ZEON CORPORATION	5.1
ASAHI MUTUAL LIFE INSURANCE COMPANY	3.8

COMMON STOCK PRICE TRENDS

	2005	2004	2003	2002	2001
Share Price (Yen):					
High	480	387	350	352	312
Low	342	272	235	228	200
Fiscal Year-End	425	357	304	296	235
Common Stock Issued	342,598,162	342,598,162	342,598,162	342,598,162	342,598,162

STOCK PRICE RANGE AND TRADING VOLUME ON THE TOKYO STOCK EXCHANGE



Note: Monthly stock prices and trading volume are based on Tokyo Stock Exchange trading.