

Investor Information

As of December 31, 2012

Company Name:

The Yokohama Rubber Co., Ltd.

Head Office:

36-11, Shimbashi 5-chome, Minato-ku, Tokyo 105-8685, Japan

Established:

October 13, 1917

Paid-in Capital:

¥38,909 million

Fiscal Year-End:

December 31 (changed in 2011 from March 31)

General Meeting of Shareholders:

March (changed in 2012 from June)

Transfer Agent:

Sumitomo Mitsui Trust Bank, Limited

4-1, Marunouchi 1-chome, Chiyoda-ku, Tokyo 100-0005, Japan

Stock Exchange Listings:

Tokyo, Osaka, Nagoya

Contact Point for Investors:

PR/IR section, Corporate Communications Dept.

36-11, Shimbashi 5-chome, Minato-ku, Tokyo 105-8685, Japan

Phone: 81-(0)3-5400-4531 Facsimile: 81-(0)3-5400-4570

Investor Relations Website:

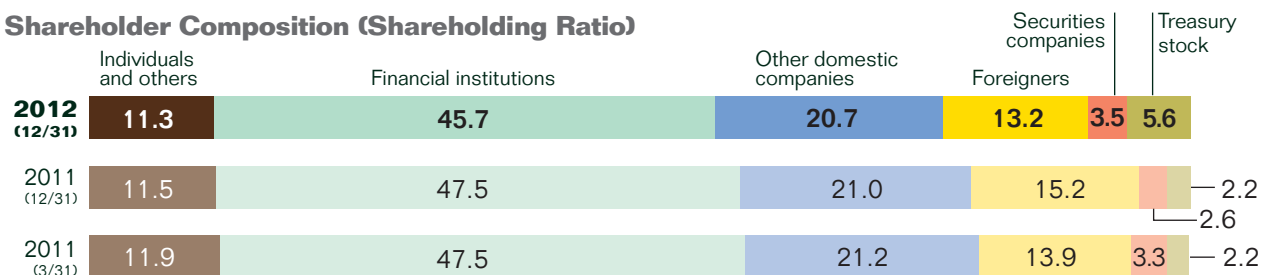
http://www.yrc-pressroom.jp/ir_en/

Stock Information

As of December 31, 2012

Authorized number of shares: 700,000,000
 Number of shares issued and outstanding: 342,598,162—unchanged from December 31, 2011
 Number of shareholders: 14,706—down 465 from December 31, 2011

Shareholder Composition (Shareholding Ratio)



Major Shareholders

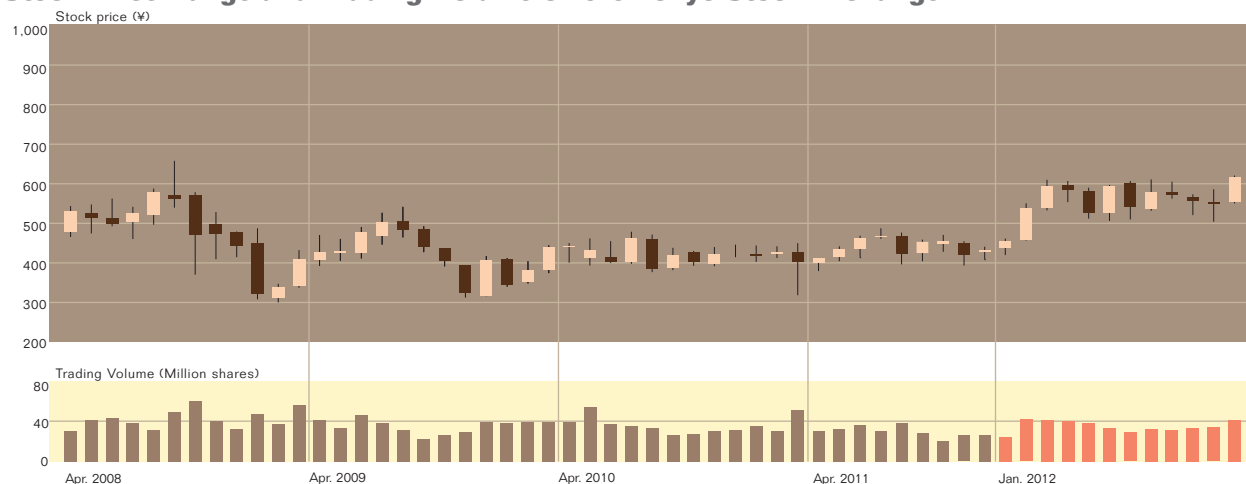
Name	Number of shares (thousands)	Percentage of total shares (%)
ZEON CORPORATION	29,307	8.5
ASAHI MUTUAL LIFE INSURANCE COMPANY	27,260	7.9
Japan Trustee Services Bank, Ltd. (trust account)	23,311	6.8
The Master Trust Bank of Japan, Ltd. (trust account)	20,897	6.0
Furukawa Electric Co., Ltd.	7,571	2.2

Note: Treasury stock of 19,377 thousand shares has been excluded in preparing the list of major shareholders.

Common Stock Price Trends

	2012	2011 (4/11–12/11)	2011 (4/10–3/11)	2010	2009
Stock Price (Yen):					
High	¥ 624	¥ 489	¥ 480	¥ 542	¥ 658
Low	421	380	318	314	301
Fiscal Year-End	620	432	403	440	409
Shares of Common Stock Issued and Outstanding	342,598,162	342,598,162	342,598,162	342,598,162	342,598,162

Stock Price Range and Trading Volume on the Tokyo Stock Exchange



The Yokohama Rubber Co., Ltd. 36-11, Shimbashi 5-chome, Minato-ku, Tokyo 105-8685, Japan Phone: 81-(0)3-5400-4531